

Mendig - New York - Oklahoma Trip8 (V4.5)

Flight created on 10.04.2020 (29.10.2023 V4.5 English)

Estimated flight duration 5h45min. (48h all 8 trips)

The An2 flies at 100, the Mooney at 170 KIAS, so all times are shorter by a factor of 1.7.

Difficulty level difficult/very difficult (with/without help)

Task: Fly the AN2 from Mendig (Germany) to Oklahoma (USA).

E Introduction

This is the re-enacted flight of "Steel Buddy" Michael, from Mendig to New York and on to Oklahoma, in the old biplane An2.

Because the AN2 is not P3dV5 capable, here only the alternative version with the Mooney.

If you still own a P3dV4 and bought the AN2, you can download an AN2-ready version at this address: <https://www.andi20.ch/p3d>

To still have some AN2 feeling left, I leave the help texts and pictures for the AN2.

I have also adjusted the following:

1) Refill fuel:

The Mooney flies with 18% fuel the same distance as the An2 with 90%.

So that you can still enjoy the "pump fuel", the Mooney starts with 28% fuel.

2) AN2 had neither autopilot nor GPS:

The Mooney has both. Using them makes the flight easier, but can lead to problems if, for example, GPS steers somewhere other than the air traffic control specifies.

3) Overheating problems, and other things which only occur with AN2:

Overheating problems, etc., don't exist.

4) Doesn't matter, you can at least re-fly the flight.

Ignore data on speed and flap position, they are only valid for the AN2.

Data on power, propeller speed and mixture apply to both aircraft.

Info about Trip 8

After the unscheduled landing in Cincinnati, we continue to

Oklahoma.

The weather is good, so this will be a smooth flight.

However, a stopover is necessary, because the distance is too far without an extra tank.

(The extra tank was only installed for the Atlantic crossing and is now in Toni's barn at High View Farm).

Start of the flight

Trip 8: Cincinnati (KCVG) - Oklahoma: Will Rogers World (KOKC)
685nm

You are standing in Cincinnati on runway 27.

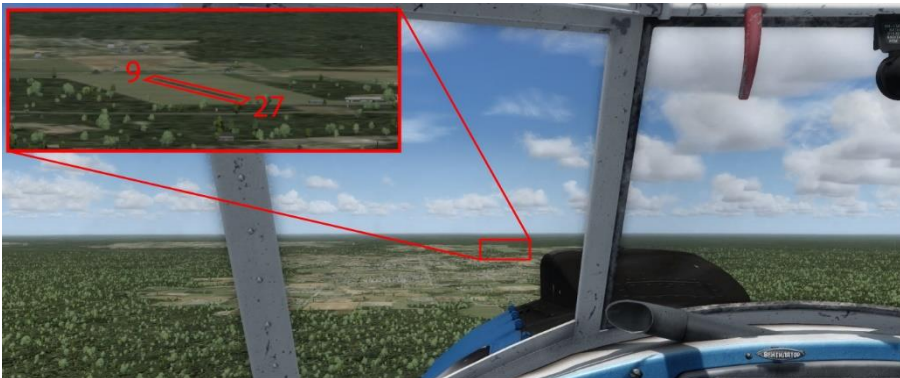
Take off, climb to 4000 feet (1200m) and fly heading 260.

After about 400nm it's time to refuel some fuel. Toni knows a nice little airport:

Cassville Mun (94K)

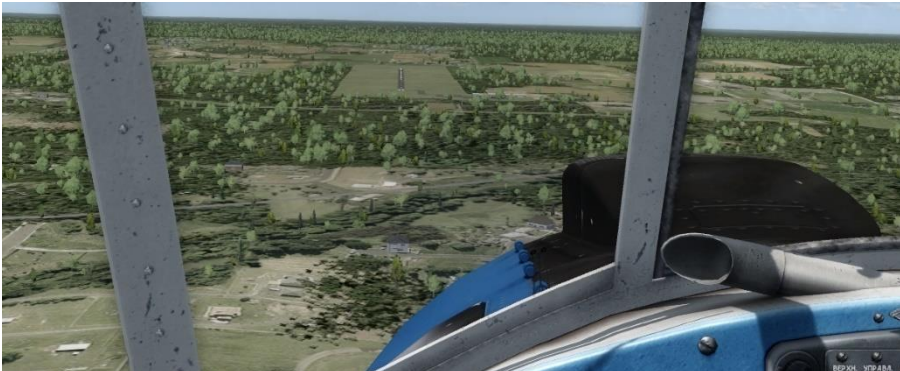
So fly on announcement heading 290.

The tower will guide you into the approach.

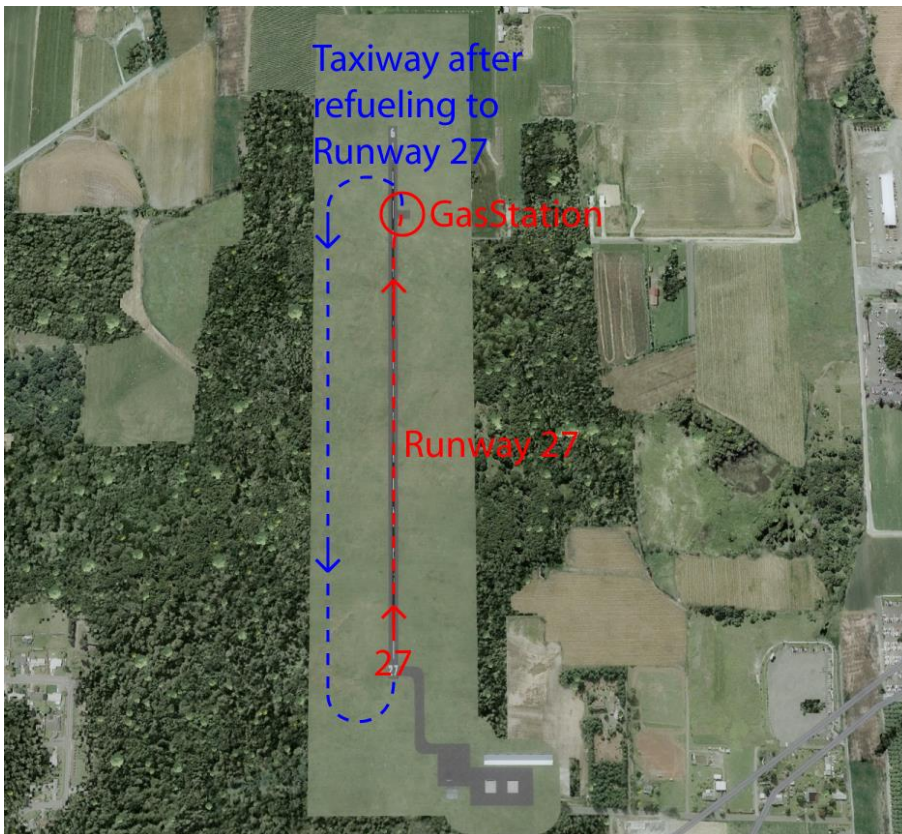


Runway 27 is the target.

Once the airport is in sight, align yourself with the runway.

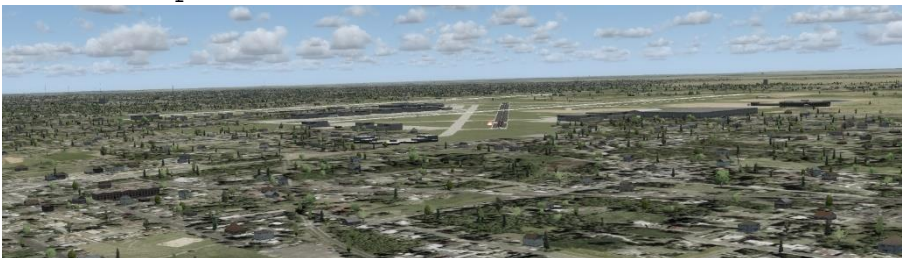


Roll to the gas station.

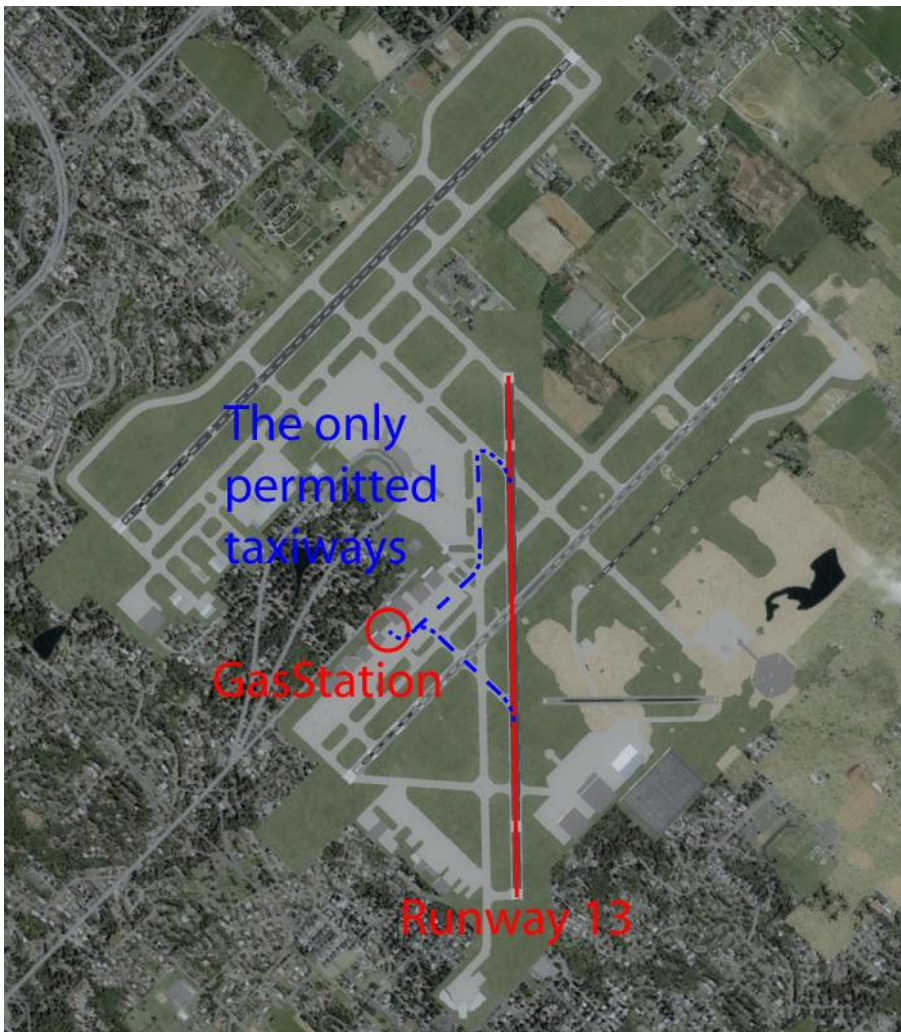


After refueling, return to runway 27 and continue.

After a while you will be guided into the approach to Will Rogers World airport.



Be sure to follow the instructions of the tower.
Failure to do so will have consequences.



Roll to the gas station.

I hope you enjoyed this flight, if so please give feedback to p3d@andi20.ch . Also send error messages (spelling mistakes, wrong information, etc.) to p3d@andi20.ch, I appreciate any feedback.