

Mendig - New York - Oklahoma Trip8 (V2.5)

Flight created on 10.04.2020 (29.10.2023 V2.5 English)

Estimated flight duration 5h45min. (48h all 8 trips)

Difficulty level difficult/very difficult (with/without help)

Task: Fly the AN2 from Mendig (Germany) to Oklahoma (USA).

Introduction

This is the re-enacted flight of "Steel Buddy" Michael, from Mendig to New York and on to Oklahoma, in the old biplane An2.

Without autopilot and GPS it will be a hard and tough trip! Michael had a portable GPS on board, the An2 doesn't have one, so you'll probably have to stick to the operational compass.

The AN2 is unfortunately not included in the P3D...

This aircraft is available for purchase at Aerosoft (for about 27 Euro).

Here is the download/purchase link:

<https://www.aerosoft.com/de/flugsimulation/flight-simulator-x/flugzeuge/2259/antonov-an-2>

I think for fans it is worth it all, the machine is great implemented!

Don't worry, I have created the flight twice with great effort, so that fans of the "Steel Buddies" can fly the flight without AN2: With the "Standard Mooney" from P3D.

However, some things are different:

1) Refill with fuel:

The Mooney flies with 18% fuel the same distance as the An2 with 90%.

(So that you can still enjoy the "fuel pumping", the Mooney starts with 28% fuel).

2) Everything "flying by hand", without autopilot:

The Mooney has autopilot and GPS. Using them makes the flight easier

(but can lead to problems, if e.g. GPS steers somewhere else than the air traffic control specifies).

3) Overheating problems, and other things which only occur with AN2:

Overheating problems etc. do not exist.

4) Egal, man kann den Flug wenigstens nachfliegen.

When flying the Mooney, ignore the speed and flap settings.

Power, propeller speed and mixture data apply to both aircraft.

5) Zeitangaben sind bei der Mooney auch anders:

The An2 flies with 100, the Mooney with 170 KIAS, so all times are shorter by a factor of 1.7.

(E.g. flight 1 does not take 6h, but only about 3.5h).

Info about Trip 8

After the unscheduled landing in Cincinnati, we continue to Oklahoma.

The weather is good, so this will be a smooth flight.

However, a stopover is necessary, because the distance is too far without an extra tank.

(The extra tank was only installed for the Atlantic crossing and is now in Toni's barn at High View Farm).

Start of the flight

Trip 8: Cincinnati (KCVG) - Oklahoma: Will Rogers World (KOKC)
685nm

You are standing in Cincinnati on runway 27.

Take off, climb to 4000 feet (1200m) and fly heading 260.

After about 400nm it's time to refuel some fuel. Toni knows a nice little airport:

Cassville Mun (94K)

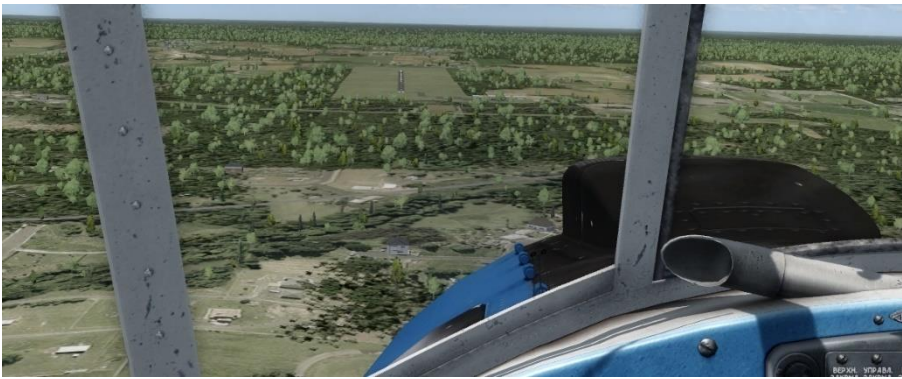
So fly on announcement heading 290.

The tower will guide you into the approach.

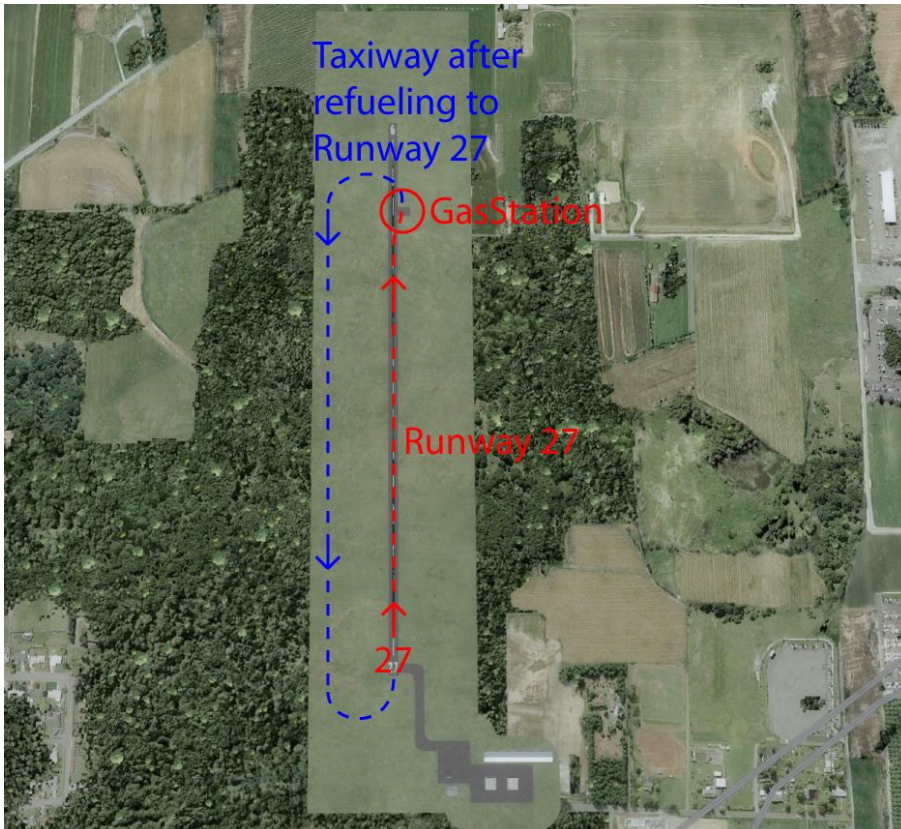


Runway 27 is the target.

Once the airport is in sight, align yourself with the runway.



Roll to the gas station.

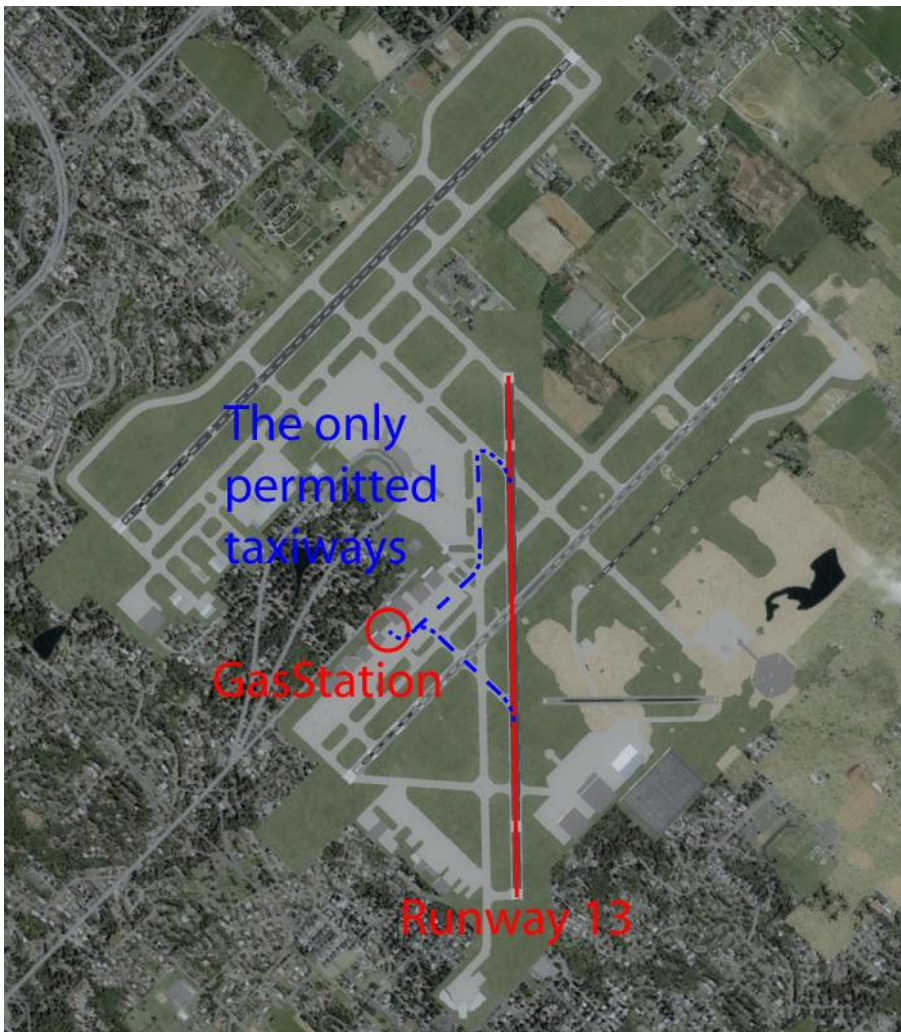


After refueling, return to runway 27 and continue.

After a while you will be guided into the approach to Will Rogers World airport.



Be sure to follow the instructions of the tower.
Failure to do so will have consequences.



Roll to the gas station.

I hope you enjoyed this flight, if so please give feedback to p3d@andi20.ch . Also send error messages (spelling mistakes, wrong information, etc.) to p3d@andi20.ch, I appreciate any feedback.